



NURSERY SUPPLIES

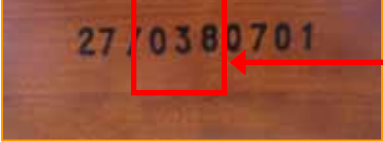
Simon Horn - Cot Part Identification & Parts Sheet




Within this section look for the identifiers below

e.g.

1. **659a** Handwritten numbers in black marker pen possibly with a letter after the numbers
Please go to Section 1 below.

2.  If your cot has this marking identifiers and this marked number is **less than 036** then go to Section 2
If your cot has this marking identifiers and this marked number is **greater than 036** then go to Section 3

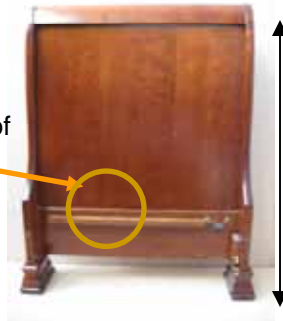
3.  Brass Disc with green teddy bear logo
If your cot has this brass plate, then please go to Section 4 below

4. **4063·WO** If your cot has this marking identifiers, then please go to Section 5 below


Four numbers & two letters, stamped within the wood, Either white or plain embossed

Simon Horn - Cot Part Identification & Parts Sheet – Section 1

What type of design of screw holds this rail?



Height of Cot End:	92.50cm
Serial Number Format:	Hand Written in black marker pen
Approx Year:	1994 – 1997

If the screw head is	Item Required	Sizes & Quantity Required	Fitting Tool Required
 Silver Pozi	 Confirmat Crosshead	10mm x 70mm Qty x10 7mm x 38mm Qty x13	 Screwdriver PZ3
 Yellow Pozi	 Screw PZ2 - Yellow	4.50mm x 60mm Qty x10 4.50mm x 40mm Qty x13	 Screwdriver PZ2
 Silver Allen SW4	 Confirmat Allen SW4	10mm x 70mm Qty x10 10mm x 38mm Qty x13	 Allen Key SW4

In Addition to the above you may also need

Item Photo	Description	Qty Required	Fitting Tool Required
	SISO Fuerte Assembly Barrel House Worm Gear 35mm x17mm 11.03.610	Qty x4	 Allen Key SW6
	SISO Fuerte Assembly Steel Dowel BZP M8 64mm 11.03.620	Qty x4	n/a – hand fit
	Brass Cot Rod Holder Set	1 x Set of 3	n/a – hand fit
	Brass Swing Catches	1 x Pair	n/a – hand fit
	Brass Cot Rods, 7/32" 65.50cm Length	1 x Pair	n/a – hand fit

Simon Horn - Cot Part Identification & Parts Sheet – Section 2

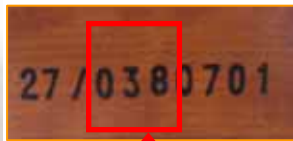


Please measure this height.

If this height is 94cm then please go to Section 2a





If this height is 108.50cm then please go to section 3

Simon Horn - Cot Part Identification & Parts Sheet – Section 2a



Less Than 36

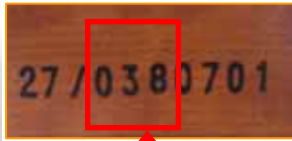
Height of Cot End:	94cm
Serial Number Format:	xx / XXX XX XX
Approx Year:	1997 - 2001

Item Photo	Description	Qty Required	Fitting Tool Required
	Machine Screw M4 x 35 Brass Countersunk	Qty x 10	 Screwdriver Slotted 5mm
	M5 Socket Head Cap Screws	65mm Socket Head Cap Qty x6 40mm Socket Head Cap Qty x4	 Allen Key SW4

In Addition to the above you may also need



Item Photo	Description	Qty Required	Fitting Tool Required
	SISO Fuerte Assembly Barrel House Worm Gear 35mm x17mm 11.03.610	Qty x4	 Allen Key SW6
	SISO Fuerte Assembly Steel Dowel BZP M8 64mm 11.03.620	Qty x4	n/a – hand fit
	Brass Cot Rod Holder Set	1 x Set of 3	n/a – hand fit
	Brass Swing Catches	1 x Pair	n/a – hand fit
	Brass Cot Rods, 7/32" Diameter 65.50cm Length	1 x Pair	n/a – hand fit

Simon Horn - Cot Part Identification & Parts Sheet – Section 3



More Than 36

Height of Cot End:	108.50cm
Serial Number Format:	xx / XXX XX XX
Approx Year:	2000 Onwards

Item Photo	Description	Qty Required	Fitting Tool Required
	Machine Screw M4 x 35 Brass Countersunk	Qty x 10	 Screwdriver Slotted 5mm

In Addition to the above you may also need



Item Photo	Description	Qty Required	Fitting Tool Required
	SISO Fuerte Assembly Barrel House Worm Gear 35mm x17mm 11.03.610	Qty x4	 Allen Key SW6
	SISO Fuerte Assembly Steel Dowel BZP M8 64mm 11.03.620	Qty x4	n/a – hand fit
	Brass Cot Rod Holder Set	1 x Set of 3	n/a – hand fit
	Brass Swing Catches	1 x Pair	n/a – hand fit
	Brass Cot Rods, 7/32" Diameter 84cm Length	1 x Pair	n/a – hand fit

Simon Horn - Cot Part Identification & Parts Sheet – Section 4



Brass Disc
Green Teddy Bear
Logo

Height of Cot End:	108.50cm
Serial Number Format:	Teddy Bear Logo
Approx Year:	2005 onwards Childhood Classics

Item Photo	Description	Qty Required	Fitting Tool Required
	Machine Screw M4 x 35 Brass Countersunk	Qty x 10	 Screwdriver Slotted 5mm

In Addition to the above you may also need

Item Photo	Description	Qty Required	Fitting Tool Required
	35mm Diameter SISO Fuerte Assembly Barrel House Worm Gear 35mm x17mm 11.03.610	If the diameter is 25mm, we have been unable to source spare parts of this Size. Qty x4	 Allen Key SW6
	SISO Fuerte Assembly Steel Dowel BZP M8 64mm 11.03.620	Qty x4	n/a – hand fit
	Brass Cot Rod Holder Set	1 x Set of 3	n/a – hand fit
	Brass Swing Catches	1 x Pair	n/a – hand fit
	Brass Cot Rods, 7/32" Diameter 84cm Length	1 x Pair	n/a – hand fit

Simon Horn - Cot Part Identification & Parts Sheet – Section 5



Please measure this height.

If this height is 94cm then please go to Section 5a



If this height is 108.50cm then please go to section 6

Simon Horn - Cot Part Identification & Parts Sheet – Section 5a



4063-WO

Height of Cot End:	94cm
Serial Number Format:	4 Numbers 2 Letters
Approx Year:	1994 – 2007 Rosewood Cot

Item Photo	Description	Qty Required	Fitting Tool Required
	Machine Screw M4 x 35 Brass Countersunk	Qty x 10	 Screwdriver Slotted 5mm

In Addition to the above you may also need



Item Photo	Description	Qty Required	Fitting Tool Required
	98mm Bolt 5/16" Whitworth Thread (BSW)	Qty x4	 Large Screwdriver 7mm
	Washers for above bolt 5/16"	Qty x4	n/a – hand fit
	Brass Cot Rod Holder Set	1 x Set of 3	n/a – hand fit
	Brass Swing Catches	1 x Pair	n/a – hand fit
	Brass Cot Rods, 7/32" Diameter 65.50cm Length	1 x Pair	n/a – hand fit

Simon Horn - Cot Part Identification & Parts Sheet – Section 6



4063-WO

Height of Cot End:	108.50cm
Serial Number Format:	4 Numbers 2 Letters
Approx Year:	1994 – 2007 Rosewood Cot

Item Photo	Description	Qty Required	Fitting Tool Required
	Machine Screw M4 x 35 Brass Countersunk	Qty x 10	 Screwdriver Slotted 5mm

In Addition to the above you may also need

Item Photo	Description	Qty Required	Fitting Tool Required
	98mm Bolt 5/16" Whitworth Thread (BSW)	Qty x4	 Large Screwdriver 7mm
	Washers for above bolt 5/16"	Qty x4	n/a – hand fit
	Brass Cot Rod Holder Set	1 x Set of 3	n/a – hand fit
	Brass Swing Catches	1 x Pair	n/a – hand fit
	Brass Cot Rods, 7/32" Diameter 84cm Length	1 x Pair	n/a – hand fit